



# STAAR Item Analysis with Responses by Item

## for INDIAN SPRING MIDDLE

Subject: Mathematics Curriculum: Grade 07 Language: E Administration: 4 2014 Test Version(s): STAAR,STAAR-L  
 Demographic Group(s): All Students  
 Student Count: 187 Source: Admin

#	Course	Reporting Standard/Student Expectation	Correct	A/F	B/G	C/H	D/J	Other
1	Math-Gr7	Rpt Cat 5 - The student will demonstrate an understanding of probability and Statistics <b>SE: 7.11A - The student is expected to select and use an appropriate representation for presenting and displaying relationships among collected data, including line plot, line graph, bar graph, stem and leaf plot, circle graph, and Venn diagrams, and justify the selection (S)</b> DUAL:	B 56%	10 5%	105 56%	24 13%	46 25%	1 1%
2	Math-Gr7	Rpt Cat 1 - The student will demonstrate an understanding of numbers, operations, and quantitative reasoning. <b>SE: 7.02B - The student is expected to use addition, subtraction, multiplication, and division to solve problems involving fractions and decimals (R)</b> TEA 2012 Mapped SE(s): 7.3A, 7.3B <b>DUAL: 7.13A - The student is expected to identify and apply mathematics to everyday experiences, to activities in and outside of school, with other disciplines, and with other mathematical topics (P)</b> TEA 2012 Mapped SE(s): 7.1A	F 73%	136 73%	20 11%	19 10%	10 5%	1 1%
3	Math-Gr7	Rpt Cat 4 - The student will demonstrate an understanding of the concepts and uses of measurement <b>SE: 7.09B - The student is expected to connect models for volume of prisms (triangular and rectangular) and cylinders to formulas of prisms (triangular and rectangular) and cylinders (S)</b> <b>DUAL: 7.14A - The student is expected to communicate mathematical ideas using language, efficient tools, appropriate units, and graphical, numerical, physical, or algebraic mathematical models (P)</b> TEA 2012 Mapped SE(s): 7.1D	C 40%	53 28%	17 9%	75 40%	40 22%	1 1%
4	Math-Gr7	Rpt Cat 1 - The student will demonstrate an understanding of numbers, operations, and quantitative reasoning. <b>SE: 7.01B - The student is expected to convert between fractions, decimals, whole numbers, and percents mentally, on paper, or with a calculator (R)</b> DUAL:	J 68%	16 9%	17 9%	25 13%	127 68%	1 1%
5	Math-Gr7	Rpt Cat 5 - The student will demonstrate an understanding of probability and Statistics <b>SE: 7.12A - The student is expected to describe a set of data using mean, median, mode, and range (S)</b> <b>DUAL: 7.13A - The student is expected to identify and apply mathematics to everyday experiences, to activities in and outside of school, with other disciplines, and with other mathematical topics (P)</b> TEA 2012 Mapped SE(s): 7.1A	A 32%	60 32%	45 24%	27 15%	53 28%	1 1%

\* Standard type: Green - Readiness, Blue - Supporting, Purple - Process

\* Level of concern: Red - Challenging(<70%), Orange - Moderate(70-79%), Yellow - Low Risk(80-100%)



# STAAR Item Analysis with Responses by Item

## for INDIAN SPRING MIDDLE

Subject: Mathematics Curriculum: Grade 07 Language: E Administration: 4 2014 Test Version(s): STAAR,STAAR-L  
 Demographic Group(s): All Students  
 Student Count: 187 Source: Admin

#	Course	Reporting Standard/Student Expectation	Correct	A/F	B/G	C/H	D/J	Other
6	Math-Gr7	Rpt Cat 4 - The student will demonstrate an understanding of the concepts and uses of measurement SE: 7.09A - The student is expected to estimate measurements and solve application problems involving length (including perimeter and circumference) and area of polygons and other shapes (R) TEA 2012 Mapped SE(s): 7.9B, 7.9C DUAL: 7.13D - The student is expected to select tools such as real objects, manipulatives, paper/pencil, and technology or techniques such as mental math, estimation, and number sense to solve problems (P) TEA 2012 Mapped SE(s): 7.1C	H 49%	39 21%	34 18%	92 49%	20 11%	1 1%
7	Math-Gr7	Rpt Cat 1 - The student will demonstrate an understanding of numbers, operations, and quantitative reasoning. SE: 7.02F - The student is expected to select and use appropriate operations to solve problems and justify the selections (R) TEA 2012 Mapped SE(s): 7.1B DUAL: 7.15B - The student is expected to validate his/her conclusions using mathematical properties and relationships (P) TEA 2012 Mapped SE(s): 7.1G	A 60%	111 60%	20 11%	21 11%	33 18%	1 1%
8	Math-Gr7	Rpt Cat 5 - The student will demonstrate an understanding of probability and Statistics SE: 7.11B - The student is expected to make inferences and convincing arguments based on an analysis of given or collected data (R) TEA 2012 Mapped SE(s): 7.12B, 7.6F DUAL:	H 49%	23 12%	58 31%	92 49%	11 6%	2 1%
9	Math-Gr7	Rpt Cat 2 - The student will demonstrate an understanding of patterns, relationships, and algebraic reasoning. SE: 7.04C - The student is expected to use words and symbols to describe the relationship between the terms in an arithmetic sequence (with a constant rate of change) and their positions in the sequence (S) DUAL: 7.14A - The student is expected to communicate mathematical ideas using language, efficient tools, appropriate units, and graphical, numerical, physical, or algebraic mathematical models (P) TEA 2012 Mapped SE(s): 7.1D	D 48%	42 23%	40 22%	14 8%	89 48%	1 1%
10	Math-Gr7	Rpt Cat 3 - The student will demonstrate an understanding of geometry and spatial reasoning. SE: 7.07B - The student is expected to graph reflections across the horizontal or vertical axis and graph translations on a coordinate plane (R) DUAL: 7.14A - The student is expected to communicate mathematical ideas using language, efficient tools, appropriate units, and graphical, numerical, physical, or algebraic mathematical models (P) TEA 2012 Mapped SE(s): 7.1D	F 57%	106 57%	25 13%	30 16%	24 13%	1 1%

\* Standard type: Green - Readiness, Blue - Supporting, Purple - Process

\* Level of concern: Red - Challenging(<70%), Orange - Moderate(70-79%), Yellow - Low Risk(80-100%)



# STAAR Item Analysis with Responses by Item

## for INDIAN SPRING MIDDLE

Subject: Mathematics Curriculum: Grade 07 Language: E Administration: 4 2014 Test Version(s): STAAR,STAAR-L  
 Demographic Group(s): All Students  
 Student Count: 187 Source: Admin

#	Course	Reporting Standard/Student Expectation	Correct	A/F	B/G	C/H	D/J	Other
11	Math-Gr7	Rpt Cat 2 - The student will demonstrate an understanding of patterns, relationships, and algebraic reasoning. SE: 7.05B - The student is expected to formulate problem situations when given a simple equation and formulate an equation when given a problem situation (R) TEA 2012 Mapped SE(s): 7.10A, 7.10C DUAL: 7.14A - The student is expected to communicate mathematical ideas using language, efficient tools, appropriate units, and graphical, numerical, physical, or algebraic mathematical models (P) TEA 2012 Mapped SE(s): 7.1D	B 35%	40 22%	65 35%	43 23%	35 19%	3 2%
12	Math-Gr7	Rpt Cat 1 - The student will demonstrate an understanding of numbers, operations, and quantitative reasoning. SE: 7.02C - The student is expected to use models, such as concrete objects, pictorial models, and number lines, to add, subtract, multiply, and divide integers and connect the actions to algorithms (S) DUAL: 7.14A - The student is expected to communicate mathematical ideas using language, efficient tools, appropriate units, and graphical, numerical, physical, or algebraic mathematical models (P) TEA 2012 Mapped SE(s): 7.1D	G 38%	63 34%	70 38%	39 21%	13 7%	1 1%
13	Math-Gr7	Rpt Cat 5 - The student will demonstrate an understanding of probability and Statistics SE: 7.12B - The student is expected to choose among mean, median, mode, or range to describe a set of data and justify the choice for a particular situation (R) DUAL:	D 35%	26 14%	58 31%	35 19%	66 35%	1 1%
14	Math-Gr7	Rpt Cat 2 - The student will demonstrate an understanding of patterns, relationships, and algebraic reasoning. SE: 7.03A - The student is expected to estimate and find solutions to application problems involving percent (R) TEA 2012 Mapped SE(s): 7.4D DUAL: 7.13A - The student is expected to identify and apply mathematics to everyday experiences, to activities in and outside of school, with other disciplines, and with other mathematical topics (P) TEA 2012 Mapped SE(s): 7.1A	G 33%	30 16%	62 33%	32 17%	61 33%	1 1%
15	Math-Gr7	Rpt Cat 1 - The student will demonstrate an understanding of numbers, operations, and quantitative reasoning. SE: 7.02B - The student is expected to use addition, subtraction, multiplication, and division to solve problems involving fractions and decimals (R) TEA 2012 Mapped SE(s): 7.3A, 7.3B DUAL: 7.13B - The student is expected to use a problem-solving model that incorporates understanding the problem, making a plan, carrying out the plan, and evaluating the solution for reasonableness (P) TEA 2012 Mapped SE(s): 7.1B	A 32%	59 32%	43 23%	48 26%	34 18%	2 1%

\* Standard type: Green - Readiness, Blue - Supporting, Purple - Process

\* Level of concern: Red - Challenging(<70%), Orange - Moderate(70-79%), Yellow - Low Risk(80-100%)



# STAAR Item Analysis with Responses by Item

## for INDIAN SPRING MIDDLE

Subject: Mathematics Curriculum: Grade 07 Language: E Administration: 4 2014 Test Version(s): STAAR,STAAR-L  
 Demographic Group(s): All Students  
 Student Count: 187 Source: Admin

#	Course	Reporting Standard/Student Expectation	Correct	A/F	B/G	C/H	D/J	Other
16	Math-Gr7	Rpt Cat 2 - The student will demonstrate an understanding of patterns, relationships, and algebraic reasoning. <b>SE: 7.03B - The student is expected to estimate and find solutions to application problems involving proportional relationships such as similarity, scaling, unit costs, and related measurement units (R)</b> TEA 2012 Mapped SE(s): 7.4D, 7.5C <b>DUAL: 7.13A - The student is expected to identify and apply mathematics to everyday experiences, to activities in and outside of school, with other disciplines, and with other mathematical topics (P)</b> TEA 2012 Mapped SE(s): 7.1A	H 27%	15 8%	40 22%	51 27%	79 42%	1 1%
17	Math-Gr7	Rpt Cat 4 - The student will demonstrate an understanding of the concepts and uses of measurement <b>SE: 7.09C - The student is expected to estimate measurements and solve application problems involving volume of prisms (rectangular and triangular) and cylinders (R)</b> TEA 2012 Mapped SE(s): 7.9A <b>DUAL: 7.13B - The student is expected to use a problem-solving model that incorporates understanding the problem, making a plan, carrying out the plan, and evaluating the solution for reasonableness (P)</b> TEA 2012 Mapped SE(s): 7.1B	C 31%	17 9%	80 43%	57 31%	26 14%	6 3%
18	Math-Gr7	Rpt Cat 2 - The student will demonstrate an understanding of patterns, relationships, and algebraic reasoning. <b>SE: 7.05A - The student is expected to use concrete and pictorial models to solve equations and use symbols to record the actions (S)</b> TEA 2012 Mapped SE(s): 7.11A <b>DUAL: 7.14A - The student is expected to communicate mathematical ideas using language, efficient tools, appropriate units, and graphical, numerical, physical, or algebraic mathematical models (P)</b> TEA 2012 Mapped SE(s): 7.1D	A 8%	14 8%	167 90%	0 0%	0 0%	5 3%
19	Math-Gr7	Rpt Cat 3 - The student will demonstrate an understanding of geometry and spatial reasoning. <b>SE: 7.08A - The student is expected to sketch three-dimensional figures when given the top, side, and front views (S)</b> DUAL:	C 27%	25 13%	39 21%	50 27%	70 38%	2 1%
20	Math-Gr7	Rpt Cat 1 - The student will demonstrate an understanding of numbers, operations, and quantitative reasoning. <b>SE: 7.01B - The student is expected to convert between fractions, decimals, whole numbers, and percents mentally, on paper, or with a calculator (R)</b> DUAL:	G 37%	73 39%	69 37%	8 4%	33 18%	3 2%

\* Standard type: Green - Readiness, Blue - Supporting, Purple - Process

\* Level of concern: Red - Challenging(<70%), Orange - Moderate(70-79%), Yellow - Low Risk(80-100%)



# STAAR Item Analysis with Responses by Item

## for INDIAN SPRING MIDDLE

Subject: Mathematics Curriculum: Grade 07 Language: E Administration: 4 2014 Test Version(s): STAAR,STAAR-L  
 Demographic Group(s): All Students  
 Student Count: 187 Source: Admin

#	Course	Reporting Standard/Student Expectation	Correct	A/F	B/G	C/H	D/J	Other
21	Math-Gr7	Rpt Cat 2 - The student will demonstrate an understanding of patterns, relationships, and algebraic reasoning. <b>SE: 7.05B - The student is expected to formulate problem situations when given a simple equation and formulate an equation when given a problem situation (R)</b> TEA 2012 Mapped SE(s): 7.10A, 7.10C <b>DUAL: 7.14A - The student is expected to communicate mathematical ideas using language, efficient tools, appropriate units, and graphical, numerical, physical, or algebraic mathematical models (P)</b> TEA 2012 Mapped SE(s): 7.1D	C 44%	23 12%	60 32%	81 44%	19 10%	3 2%
22	Math-Gr7	Rpt Cat 3 - The student will demonstrate an understanding of geometry and spatial reasoning. <b>SE: 7.07A - The student is expected to locate and name points on a coordinate plane using ordered pairs of integers (S)</b> <b>DUAL: 7.13D - The student is expected to select tools such as real objects, manipulatives, paper/pencil, and technology or techniques such as mental math, estimation, and number sense to solve problems (P)</b> TEA 2012 Mapped SE(s): 7.1C	J 50%	38 20%	19 10%	31 17%	93 50%	5 3%
23	Math-Gr7	Rpt Cat 1 - The student will demonstrate an understanding of numbers, operations, and quantitative reasoning. <b>SE: 7.02E - The student is expected to simplify numerical expressions involving order of operations and exponents (S)</b> DUAL:	B 32%	22 12%	60 32%	61 33%	42 23%	1 1%
24	Math-Gr7	Rpt Cat 5 - The student will demonstrate an understanding of probability and Statistics <b>SE: 7.10B - The student is expected to find the probability of independent events (S)</b> TEA 2012 Mapped SE(s): 7.6C, 7.6D, 7.6I <b>DUAL: 7.13A - The student is expected to identify and apply mathematics to everyday experiences, to activities in and outside of school, with other disciplines, and with other mathematical topics (P)</b> TEA 2012 Mapped SE(s): 7.1A	H 32%	59 32%	53 28%	59 32%	14 8%	1 1%
25	Math-Gr7	Rpt Cat 3 - The student will demonstrate an understanding of geometry and spatial reasoning. <b>SE: 7.06D - The student is expected to use critical attributes to define similarity (R)</b> TEA 2012 Mapped SE(s): 7.5A <b>DUAL: 7.15B - The student is expected to validate his/her conclusions using mathematical properties and relationships (P)</b> TEA 2012 Mapped SE(s): 7.1G	A 28%	52 28%	45 24%	27 15%	61 33%	1 1%

\* Standard type: Green - Readiness, Blue - Supporting, Purple - Process

\* Level of concern: Red - Challenging(<70%), Orange - Moderate(70-79%), Yellow - Low Risk(80-100%)



# STAAR Item Analysis with Responses by Item

## for INDIAN SPRING MIDDLE

Subject: Mathematics Curriculum: Grade 07 Language: E Administration: 4 2014 Test Version(s): STAAR,STAAR-L  
 Demographic Group(s): All Students  
 Student Count: 187 Source: Admin

#	Course	Reporting Standard/Student Expectation	Correct	A/F	B/G	C/H	D/J	Other
26	Math-Gr7	Rpt Cat 3 - The student will demonstrate an understanding of geometry and spatial reasoning. <b>SE: 7.06B - The student is expected to use properties to classify triangles and quadrilaterals (S)</b> <b>DUAL: 7.13C - The student is expected to select or develop an appropriate problem-solving strategy from a variety of different types, including drawing a picture, looking for a pattern, systematic guessing and checking, acting it out, making a table, working a simpler problem, or working backwards to solve a problem (P)</b> TEA 2012 Mapped SE(s): 7.1B	J 20%	55 30%	37 20%	55 30%	38 20%	1 1%
27	Math-Gr7	Rpt Cat 5 - The student will demonstrate an understanding of probability and Statistics <b>SE: 7.12B - The student is expected to choose among mean, median, mode, or range to describe a set of data and justify the choice for a particular situation (R)</b> DUAL:	A 27%	50 27%	53 28%	38 20%	44 24%	1 1%
28	Math-Gr7	Rpt Cat 3 - The student will demonstrate an understanding of geometry and spatial reasoning. <b>SE: 7.07B - The student is expected to graph reflections across the horizontal or vertical axis and graph translations on a coordinate plane (R)</b> <b>DUAL: 7.13D - The student is expected to select tools such as real objects, manipulatives, paper/pencil, and technology or techniques such as mental math, estimation, and number sense to solve problems (P)</b> TEA 2012 Mapped SE(s): 7.1C	H 44%	24 13%	12 6%	82 44%	67 36%	1 1%
29	Math-Gr7	Rpt Cat 5 - The student will demonstrate an understanding of probability and Statistics <b>SE: 7.11B - The student is expected to make inferences and convincing arguments based on an analysis of given or collected data (R)</b> TEA 2012 Mapped SE(s): 7.12B, 7.6F <b>DUAL: 7.13A - The student is expected to identify and apply mathematics to everyday experiences, to activities in and outside of school, with other disciplines, and with other mathematical topics (P)</b> TEA 2012 Mapped SE(s): 7.1A	A 33%	62 33%	33 18%	65 35%	24 13%	2 1%
30	Math-Gr7	Rpt Cat 2 - The student will demonstrate an understanding of patterns, relationships, and algebraic reasoning. <b>SE: 7.03B - The student is expected to estimate and find solutions to application problems involving proportional relationships such as similarity, scaling, unit costs, and related measurement units (R)</b> TEA 2012 Mapped SE(s): 7.4D, 7.5C <b>DUAL: 7.13A - The student is expected to identify and apply mathematics to everyday experiences, to activities in and outside of school, with other disciplines, and with other mathematical topics (P)</b> TEA 2012 Mapped SE(s): 7.1A	G 40%	55 30%	74 40%	34 18%	22 12%	1 1%

\* Standard type: Green - Readiness, Blue - Supporting, Purple - Process

\* Level of concern: Red - Challenging(<70%), Orange - Moderate(70-79%), Yellow - Low Risk(80-100%)



# STAAR Item Analysis with Responses by Item

## for INDIAN SPRING MIDDLE

Subject: Mathematics Curriculum: Grade 07 Language: E Administration: 4 2014 Test Version(s): STAAR,STAAR-L  
 Demographic Group(s): All Students  
 Student Count: 187 Source: Admin

#	Course	Reporting Standard/Student Expectation	Correct	A/F	B/G	C/H	D/J	Other
31	Math-Gr7	Rpt Cat 4 - The student will demonstrate an understanding of the concepts and uses of measurement <b>SE: 7.09A - The student is expected to estimate measurements and solve application problems involving length (including perimeter and circumference) and area of polygons and other shapes (R)</b> TEA 2012 Mapped SE(s): 7.9B, 7.9C <b>DUAL: 7.13B - The student is expected to use a problem-solving model that incorporates understanding the problem, making a plan, carrying out the plan, and evaluating the solution for reasonableness (P)</b> TEA 2012 Mapped SE(s): 7.1B	D 24%	55 30%	45 24%	39 21%	44 24%	3 2%
32	Math-Gr7	Rpt Cat 1 - The student will demonstrate an understanding of numbers, operations, and quantitative reasoning. <b>SE: 7.02D - The student is expected to use division to find unit rates and ratios in proportional relationships such as speed, density, price, recipes, and student-teacher ratio (S)</b> TEA 2012 Mapped SE(s): 7.4B <b>DUAL: 7.13A - The student is expected to identify and apply mathematics to everyday experiences, to activities in and outside of school, with other disciplines, and with other mathematical topics (P)</b> TEA 2012 Mapped SE(s): 7.1A	0.21 45%	84 45%	100 54%	0 0%	0 0%	2 1%
33	Math-Gr7	Rpt Cat 4 - The student will demonstrate an understanding of the concepts and uses of measurement <b>SE: 7.09C - The student is expected to estimate measurements and solve application problems involving volume of prisms (rectangular and triangular) and cylinders (R)</b> TEA 2012 Mapped SE(s): 7.9A <b>DUAL: 7.13B - The student is expected to use a problem-solving model that incorporates understanding the problem, making a plan, carrying out the plan, and evaluating the solution for reasonableness (P)</b> TEA 2012 Mapped SE(s): 7.1B	A 19%	35 19%	57 31%	63 34%	30 16%	1 1%
34	Math-Gr7	Rpt Cat 1 - The student will demonstrate an understanding of numbers, operations, and quantitative reasoning. <b>SE: 7.02F - The student is expected to select and use appropriate operations to solve problems and justify the selections (R)</b> TEA 2012 Mapped SE(s): 7.1B <b>DUAL: 7.15B - The student is expected to validate his/her conclusions using mathematical properties and relationships (P)</b> TEA 2012 Mapped SE(s): 7.1G	H 35%	27 15%	66 35%	65 35%	27 15%	1 1%

\* Standard type: Green - Readiness, Blue - Supporting, Purple - Process

\* Level of concern: Red - Challenging(<70%), Orange - Moderate(70-79%), Yellow - Low Risk(80-100%)





# STAAR Item Analysis with Responses by Item

## for INDIAN SPRING MIDDLE

Subject: Mathematics Curriculum: Grade 07 Language: E Administration: 4 2014 Test Version(s): STAAR,STAAR-L  
 Demographic Group(s): All Students  
 Student Count: 187 Source: Admin

#	Course	Reporting Standard/Student Expectation	Correct	A/F	B/G	C/H	D/J	Other
35	Math-Gr7	Rpt Cat 2 - The student will demonstrate an understanding of patterns, relationships, and algebraic reasoning. SE: 7.04A - The student is expected to generate formulas involving unit conversions, perimeter, area, circumference, volume, and scaling (S) TEA 2012 Mapped SE(s): 7.4A, 7.8C DUAL: 7.14A - The student is expected to communicate mathematical ideas using language, efficient tools, appropriate units, and graphical, numerical, physical, or algebraic mathematical models (P) TEA 2012 Mapped SE(s): 7.1D	A 33%	61 33%	40 22%	63 34%	20 11%	2 1%
36	Math-Gr7	Rpt Cat 3 - The student will demonstrate an understanding of geometry and spatial reasoning. SE: 7.08B - The student is expected to make a net (two-dimensional model) of the surface area of a three-dimensional figure (S) DUAL:	J 48%	19 10%	46 25%	29 16%	90 48%	2 1%
37	Math-Gr7	Rpt Cat 2 - The student will demonstrate an understanding of patterns, relationships, and algebraic reasoning. SE: 7.03A - The student is expected to estimate and find solutions to application problems involving percent (R) TEA 2012 Mapped SE(s): 7.4D DUAL: 7.13A - The student is expected to identify and apply mathematics to everyday experiences, to activities in and outside of school, with other disciplines, and with other mathematical topics (P) TEA 2012 Mapped SE(s): 7.1A	B 48%	22 12%	89 48%	49 26%	24 13%	2 1%
38	Math-Gr7	Rpt Cat 4 - The student will demonstrate an understanding of the concepts and uses of measurement SE: 7.09C - The student is expected to estimate measurements and solve application problems involving volume of prisms (rectangular and triangular) and cylinders (R) TEA 2012 Mapped SE(s): 7.9A DUAL: 7.13A - The student is expected to identify and apply mathematics to everyday experiences, to activities in and outside of school, with other disciplines, and with other mathematical topics (P) TEA 2012 Mapped SE(s): 7.1A	16.2 15%	27 15%	157 84%	0 0%	0 0%	2 1%
39	Math-Gr7	Rpt Cat 5 - The student will demonstrate an understanding of probability and Statistics SE: 7.12B - The student is expected to choose among mean, median, mode, or range to describe a set of data and justify the choice for a particular situation (R) DUAL:	A 27%	50 27%	39 21%	34 18%	62 33%	1 1%

\* Standard type: Green - Readiness, Blue - Supporting, Purple - Process

\* Level of concern: Red - Challenging(<70%), Orange - Moderate(70-79%), Yellow - Low Risk(80-100%)





# STAAR Item Analysis with Responses by Item

## for INDIAN SPRING MIDDLE

Subject: Mathematics Curriculum: Grade 07 Language: E Administration: 4 2014 Test Version(s): STAAR,STAAR-L  
 Demographic Group(s): All Students  
 Student Count: 187 Source: Admin

#	Course	Reporting Standard/Student Expectation	Correct	A/F	B/G	C/H	D/J	Other
40	Math-Gr7	Rpt Cat 5 - The student will demonstrate an understanding of probability and Statistics SE: 7.11B - The student is expected to make inferences and convincing arguments based on an analysis of given or collected data (R) TEA 2012 Mapped SE(s): 7.12B, 7.6F DUAL: 7.13B - The student is expected to use a problem-solving model that incorporates understanding the problem, making a plan, carrying out the plan, and evaluating the solution for reasonableness (P) TEA 2012 Mapped SE(s): 7.1B	G 51%	24 13%	94 51%	33 18%	33 18%	2 1%
41	Math-Gr7	Rpt Cat 1 - The student will demonstrate an understanding of numbers, operations, and quantitative reasoning. SE: 7.02F - The student is expected to select and use appropriate operations to solve problems and justify the selections (R) TEA 2012 Mapped SE(s): 7.1B DUAL: 7.14A - The student is expected to communicate mathematical ideas using language, efficient tools, appropriate units, and graphical, numerical, physical, or algebraic mathematical models (P) TEA 2012 Mapped SE(s): 7.1D	B 43%	32 17%	80 43%	56 30%	17 9%	1 1%
42	Math-Gr7	Rpt Cat 2 - The student will demonstrate an understanding of patterns, relationships, and algebraic reasoning. SE: 7.04B - The student is expected to graph data to demonstrate relationships in familiar concepts such as conversions, perimeter, area, circumference, volume, and scaling (S) TEA 2012 Mapped SE(s): 7.4A, 7.8C DUAL: 7.14A - The student is expected to communicate mathematical ideas using language, efficient tools, appropriate units, and graphical, numerical, physical, or algebraic mathematical models (P) TEA 2012 Mapped SE(s): 7.1D	H 32%	47 25%	29 16%	60 32%	49 26%	1 1%
43	Math-Gr7	Rpt Cat 3 - The student will demonstrate an understanding of geometry and spatial reasoning. SE: 7.06D - The student is expected to use critical attributes to define similarity (R) TEA 2012 Mapped SE(s): 7.5A DUAL: 7.15B - The student is expected to validate his/her conclusions using mathematical properties and relationships (P) TEA 2012 Mapped SE(s): 7.1G	B 34%	48 26%	64 34%	39 21%	32 17%	3 2%
44	Math-Gr7	Rpt Cat 3 - The student will demonstrate an understanding of geometry and spatial reasoning. SE: 7.06A - The student is expected to use angle measurements to classify pairs of angles as complementary or supplementary (S) DUAL:	129.3 6%	12 6%	172 92%	0 0%	0 0%	2 1%

\* Standard type: Green - Readiness, Blue - Supporting, Purple - Process

\* Level of concern: Red - Challenging(<70%), Orange - Moderate(70-79%), Yellow - Low Risk(80-100%)



# STAAR Item Analysis with Responses by Item

## for INDIAN SPRING MIDDLE

Subject: Mathematics Curriculum: Grade 07 Language: E Administration: 4 2014 Test Version(s): STAAR,STAAR-L  
 Demographic Group(s): All Students  
 Student Count: 187 Source: Admin

#	Course	Reporting Standard/Student Expectation	Correct	A/F	B/G	C/H	D/J	Other
45	Math-Gr7	Rpt Cat 1 - The student will demonstrate an understanding of numbers, operations, and quantitative reasoning. <b>SE: 7.01B - The student is expected to convert between fractions, decimals, whole numbers, and percents mentally, on paper, or with a calculator (R)</b> <b>DUAL: 7.13A - The student is expected to identify and apply mathematics to everyday experiences, to activities in and outside of school, with other disciplines, and with other mathematical topics (P)</b> TEA 2012 Mapped SE(s): 7.1A	B 46%	28 15%	86 46%	44 24%	25 13%	3 2%
46	Math-Gr7	Rpt Cat 4 - The student will demonstrate an understanding of the concepts and uses of measurement <b>SE: 7.09A - The student is expected to estimate measurements and solve application problems involving length (including perimeter and circumference) and area of polygons and other shapes (R)</b> TEA 2012 Mapped SE(s): 7.9B, 7.9C <b>DUAL: 7.13B - The student is expected to use a problem-solving model that incorporates understanding the problem, making a plan, carrying out the plan, and evaluating the solution for reasonableness (P)</b> TEA 2012 Mapped SE(s): 7.1B	J 30%	60 32%	49 26%	21 11%	55 30%	1 1%
47	Math-Gr7	Rpt Cat 2 - The student will demonstrate an understanding of patterns, relationships, and algebraic reasoning. <b>SE: 7.05B - The student is expected to formulate problem situations when given a simple equation and formulate an equation when given a problem situation (R)</b> TEA 2012 Mapped SE(s): 7.10A, 7.10C <b>DUAL: 7.14A - The student is expected to communicate mathematical ideas using language, efficient tools, appropriate units, and graphical, numerical, physical, or algebraic mathematical models (P)</b> TEA 2012 Mapped SE(s): 7.1D	A 44%	81 44%	42 23%	45 24%	17 9%	1 1%
48	Math-Gr7	Rpt Cat 3 - The student will demonstrate an understanding of geometry and spatial reasoning. <b>SE: 7.07B - The student is expected to graph reflections across the horizontal or vertical axis and graph translations on a coordinate plane (R)</b> <b>DUAL: 7.14A - The student is expected to communicate mathematical ideas using language, efficient tools, appropriate units, and graphical, numerical, physical, or algebraic mathematical models (P)</b> TEA 2012 Mapped SE(s): 7.1D	J 42%	17 9%	68 37%	21 11%	79 42%	1 1%
49	Math-Gr7	Rpt Cat 1 - The student will demonstrate an understanding of numbers, operations, and quantitative reasoning. <b>SE: 7.02B - The student is expected to use addition, subtraction, multiplication, and division to solve problems involving fractions and decimals (R)</b> TEA 2012 Mapped SE(s): 7.3A, 7.3B <b>DUAL: 7.13A - The student is expected to identify and apply mathematics to everyday experiences, to activities in and outside of school, with other disciplines, and with other mathematical topics (P)</b> TEA 2012 Mapped SE(s): 7.1A	C 35%	25 13%	56 30%	66 35%	36 19%	3 2%

\* Standard type: Green - Readiness, Blue - Supporting, Purple - Process

\* Level of concern: Red - Challenging(<70%), Orange - Moderate(70-79%), Yellow - Low Risk(80-100%)



# STAAR Item Analysis with Responses by Item

## for INDIAN SPRING MIDDLE

Subject: Mathematics Curriculum: Grade 07 Language: E Administration: 4 2014 Test Version(s): STAAR,STAAR-L  
 Demographic Group(s): All Students  
 Student Count: 187 Source: Admin

#	Course	Reporting Standard/Student Expectation	Correct	A/F	B/G	C/H	D/J	Other
50	Math-Gr7	Rpt Cat 2 - The student will demonstrate an understanding of patterns, relationships, and algebraic reasoning. <b>SE: 7.03A - The student is expected to estimate and find solutions to application problems involving percent (R)</b> TEA 2012 Mapped SE(s): 7.4D <b>DUAL: 7.13A - The student is expected to identify and apply mathematics to everyday experiences, to activities in and outside of school, with other disciplines, and with other mathematical topics (P)</b> TEA 2012 Mapped SE(s): 7.1A	J 41%	15 8%	27 15%	66 35%	76 41%	2 1%
51	Math-Gr7	Rpt Cat 5 - The student will demonstrate an understanding of probability and Statistics <b>SE: 7.10A - The student is expected to construct sample spaces for simple or composite experiments (S)</b> TEA 2012 Mapped SE(s): 7.6A <b>DUAL: 7.13C - The student is expected to select or develop an appropriate problem-solving strategy from a variety of different types, including drawing a picture, looking for a pattern, systematic guessing and checking, acting it out, making a table, working a simpler problem, or working backwards to solve a problem (P)</b> TEA 2012 Mapped SE(s): 7.1B	C 51%	11 6%	69 37%	94 51%	10 5%	2 1%
52	Math-Gr7	Rpt Cat 4 - The student will demonstrate an understanding of the concepts and uses of measurement <b>SE: 7.09B - The student is expected to connect models for volume of prisms (triangular and rectangular) and cylinders to formulas of prisms (triangular and rectangular) and cylinders (S)</b> <b>DUAL: 7.14A - The student is expected to communicate mathematical ideas using language, efficient tools, appropriate units, and graphical, numerical, physical, or algebraic mathematical models (P)</b> TEA 2012 Mapped SE(s): 7.1D	G 25%	67 36%	47 25%	30 16%	40 22%	2 1%
53	Math-Gr7	Rpt Cat 2 - The student will demonstrate an understanding of patterns, relationships, and algebraic reasoning. <b>SE: 7.03B - The student is expected to estimate and find solutions to application problems involving proportional relationships such as similarity, scaling, unit costs, and related measurement units (R)</b> TEA 2012 Mapped SE(s): 7.4D, 7.5C <b>DUAL: 7.13A - The student is expected to identify and apply mathematics to everyday experiences, to activities in and outside of school, with other disciplines, and with other mathematical topics (P)</b> TEA 2012 Mapped SE(s): 7.1A	C 45%	40 22%	36 19%	84 45%	24 13%	2 1%

\* Standard type: Green - Readiness, Blue - Supporting, Purple - Process

\* Level of concern: Red - Challenging(<70%), Orange - Moderate(70-79%), Yellow - Low Risk(80-100%)



# STAAR Item Analysis with Responses by Item for INDIAN SPRING MIDDLE

Subject: Mathematics Curriculum: Grade 07 Language: E Administration: 4 2014 Test Version(s): STAAR,STAAR-L

Demographic Group(s): All Students

Student Count: 187 Source: Admin

#	Course	Reporting Standard/Student Expectation	Correct	A/F	B/G	C/H	D/J	Other
54	Math-Gr7	Rpt Cat 1 - The student will demonstrate an understanding of numbers, operations, and quantitative reasoning. SE: 7.02A - The student is expected to represent multiplication and division situations involving fractions and decimals with models, including concrete objects, pictures, words, and numbers (S) DUAL: 7.13A - The student is expected to identify and apply mathematics to everyday experiences, to activities in and outside of school, with other disciplines, and with other mathematical topics (P) TEA 2012 Mapped SE(s): 7.1A	F 63%	118 63%	16 9%	15 8%	35 19%	2 1%

\* Standard type: Green - Readiness, Blue - Supporting, Purple - Process

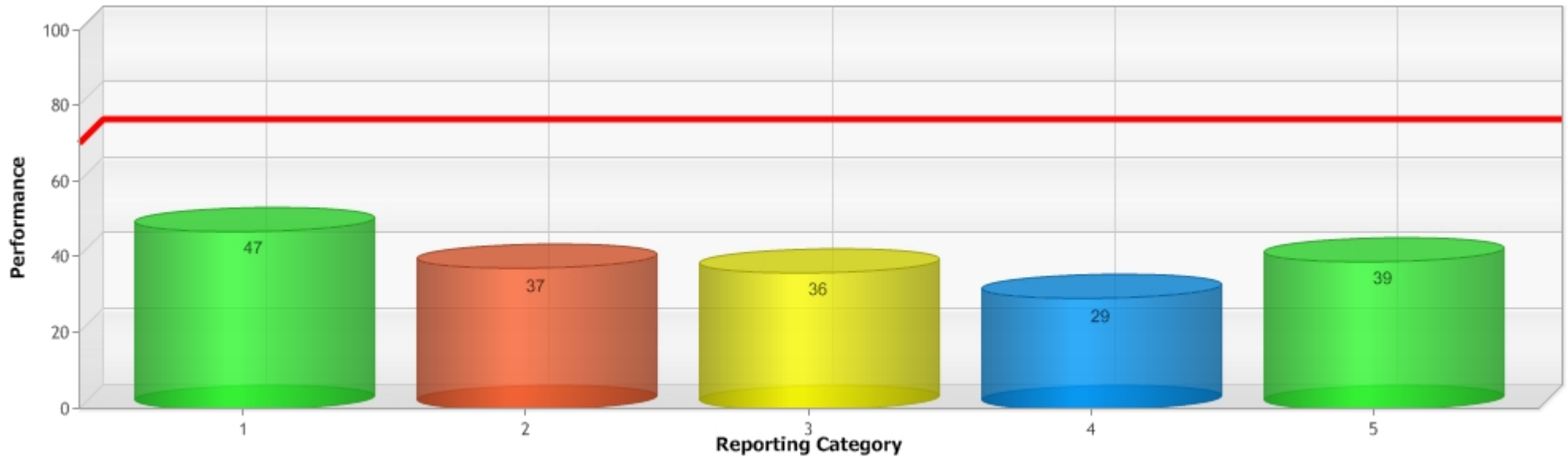
\* Level of concern: Red - Challenging(<70%), Orange - Moderate(70-79%), Yellow - Low Risk(80-100%)

# **STAAR Reporting Category Performance for INDIAN SPRING MIDDLE**

Subject: Mathematics    Curriculum: Grade 07    Language: E    Administration: 4 2014    Test Version(s): STAAR,STAAR-L  
 Demographic Group(s): All Students  
 Student Count: 187    Source: Admin

Reporting Category	Description	# of Test Points	% of Total Points	Mastery
1	The student will demonstrate an understanding of numbers, operations, and quantitative reasoning.	13	24%	47%
2	The student will demonstrate an understanding of patterns, relationships, and algebraic reasoning.	13	24%	37%
3	The student will demonstrate an understanding of geometry and spatial reasoning.	10	19%	36%
4	The student will demonstrate an understanding of the concepts and uses of measurement	8	15%	29%
5	The student will demonstrate an understanding of probability and Statistics	10	19%	39%

\* shaded row indicates mastery below 70%





# STAAR Reporting Category SE Performance for INDIAN SPRING MIDDLE

Subject: Mathematics Curriculum: Grade 07 Language: E Administration: 4 2014 Test Version(s): STAAR,STAAR-L

Demographic Group(s): All Students

Student Count: 187 Source: Admin

Reporting Category	Description	Points	Mastery	SE	Std	Course	Tested	Mastery
1	The student will demonstrate an understanding of numbers, operations, and quantitative reasoning.	13	47%	7.01B	R	Math-Gr7	3	51%
				7.02B	R	Math-Gr7	3	47%
				7.02F	R	Math-Gr7	3	46%
				7.01A	S	Math-Gr7	N/T	N/T
				7.01C	S	Math-Gr7	N/T	N/T
				7.02A	S	Math-Gr7	1	63%
				7.02C	S	Math-Gr7	1	38%
				7.02D	S	Math-Gr7	1	45%
				7.02E	S	Math-Gr7	1	32%
				7.02G	S	Math-Gr7	N/T	N/T
2	The student will demonstrate an understanding of patterns, relationships, and algebraic reasoning.	13	37%	7.03A	R	Math-Gr7	3	41%
				7.03B	R	Math-Gr7	3	37%
				7.05B	R	Math-Gr7	3	41%
				7.04A	S	Math-Gr7	1	33%
				7.04B	S	Math-Gr7	1	32%
				7.04C	S	Math-Gr7	1	48%
				7.05A	S	Math-Gr7	1	8%
3	The student will demonstrate an understanding of geometry and spatial reasoning.	10	36%	7.06D	R	Math-Gr7	2	31%
				7.07B	R	Math-Gr7	3	48%
				7.06A	S	Math-Gr7	1	6%
				7.06B	S	Math-Gr7	1	20%
				7.06C	S	Math-Gr7	N/T	N/T
				7.07A	S	Math-Gr7	1	50%
				7.08A	S	Math-Gr7	1	27%
				7.08B	S	Math-Gr7	1	48%
				7.08C	S	Math-Gr7	N/T	N/T
4	The student will demonstrate an understanding of the concepts and uses of measurement	8	29%	7.09A	R	Math-Gr7	3	34%
				7.09C	R	Math-Gr7	3	21%
				7.09B	S	Math-Gr7	2	33%
5	The student will demonstrate an understanding of probability and Statistics	10	39%	7.11B	R	Math-Gr7	3	44%
				7.12B	R	Math-Gr7	3	30%
				7.10A	S	Math-Gr7	1	51%
				7.10B	S	Math-Gr7	1	32%
				7.11A	S	Math-Gr7	1	56%
				7.12A	S	Math-Gr7	1	32%

\* Standard type: Green - Readiness, Blue - Supporting, Purple - Process

\* Level of concern: Red - Challenging(<70%), Orange - Moderate(70-79%), Yellow - Low Risk(80-100%)



# STAAR Reporting Category SE Performance for INDIAN SPRING MIDDLE

Subject: Mathematics Curriculum: Grade 07 Language: E Administration: 4 2014 Test Version(s): STAAR,STAAR-L  
Demographic Group(s): All Students  
Student Count: 187 Source: Admin

Reporting Category	Description	Points	Mastery	SE	Std	Course	Tested	Mastery
	Process Skills			7.13A	P	Math-Gr7		N/T
				7.13B	P	Math-Gr7		N/T
				7.13C	P	Math-Gr7		N/T
				7.13D	P	Math-Gr7		N/T
				7.14A	P	Math-Gr7		N/T
				7.14B	P	Math-Gr7		N/T
				7.15A	P	Math-Gr7		N/T
				7.15B	P	Math-Gr7		N/T

\* Standard type: Green - Readiness, Blue - Supporting, Purple - Process  
\* Level of concern: Red - Challenging(<70%), Orange - Moderate(70-79%), Yellow - Low Risk(80-100%)